

Where the wild things are Project 2018 - 2019

PROJECT CODE: RLP-MU33-P1

Overview of Progress: April to June 2019

This quarter has seen us ramp up community engagement, negotiating directly with landholders who have potential TEC Eucalypt Woodlands on their properties. Site assessments have focused on identifying woodlands and the threats that individual remnants are facing. This in turn informed the site-specific management plans that underpin landholder agreements.

Initial assessments have identified issues (weeds and missing vegetation layers) that need to be addressed to improve the quality of the woodlands at some sites. These are addressed as part of the project contract with individual landholders

Concurrent activity – employing and adjusting remnant assessment methodology and tool to ensure we are both complying with the conservation advice and the intent of the listing in helping secure examples of quality remnant vegetation through engaging with landholders throughout the Avon River Basin.

2 habitat augmentation structures installed - Installed insect hotels at 2 populations to monitor insect pollinator activity, with the view to install 2 more structures to deter parrots in the next year of the project.

April to June 2019

- Re-engaging interested members of the Avon River Basin community whose properties contain quality Woodland remnants
- Extension and negotiation with individual landholders, defining project outcomes and activities to gauge interest through the development of pre-proposal and final proposals
- Subsequent Letters of Engagement and Project Plans for landholders detailing agreed project outcomes
- Incorporating assessment feedback into adjustment of Eucalypt Woodland assessment tool
- Establishing monitoring regimes – setting up motion sensing cameras at priority project locations



Luke Yates, is a great example of the community's commitment to managing Woodland remnants on their properties through improving quality patches of bush.

Inappropriate grazing activity is one of the more significant threats to vegetation remnants in the Wheatbelt - especially for open Eucalypt Woodland remnants that allow for extensive stock access. Luke is fencing a 430ha remnant that contains Eucalypt Woodlands. Luke has been recording fauna sightings and is actively looking for signs of wildlife in and around the remnants. He is keen to enhance the remaining woodlands through additional fencing, revegetation and/or infill planting and weed control in the future to ensure their long-term survival.

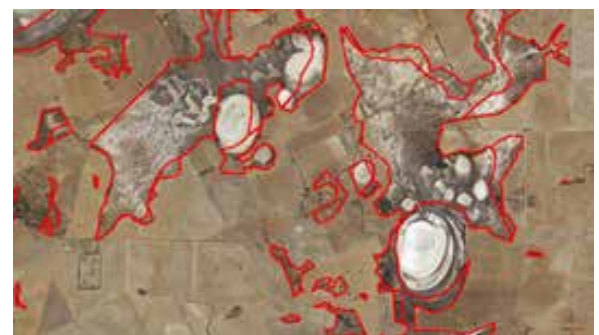
Lessons Learnt and Improvements

The assessment tool is being refined and tested and will provide a valuable engagement tool for landholders to self-assess remnants on their properties, as well as wider community to participate in citizen science across the Avon River Basin.

As always, project timings surrounding community engagement and on-ground work have been dependant on landholder's preparation and seeding activities throughout the region.

Perhaps the key learning is illustrated below, which highlights the issues with the potential extent as demonstrated in the conservation advice.

A desk top analysis is indicating an actual extent much less than originally thought. The assessment tool we are developing will be critical in ground truthing these results so we can understand where the asset actually is, rather than relying on the current deficient data.



This image illustrates the potential extent as identified in the conservation advice.



This image illustrates the possible extent of the TEC Woodland based on the desktop analysis (with a yellow boundary)