

5. Day to Day Process

- **27** Staff working locally
- Annual General Meeting is a community event*
*120 attendees in 2014
- During project delivery:
 - Workshops and training
 - Field days
 - Short Survey at community events
 - In the Paddock discussion
- Annual Community Survey
- **90%** of staff volunteer in the community

We are very proud of this

4. Project Delivery



Operations Plan • Organisation is held accountable to a Community board

Projects • Community and Industry Committees

- Aboriginal Advisory Group
- Regional Landcare Facilitator Steering Committee
- Red Card for Rabbits and Foxes Steering Committee
- Nutrient Management Technical Advisory Group
- Trials and Demonstration Technical Advisory Group

Our funding rounds • Consistently over-subscribed

Ask Community "What do you want to do?" and "How can we support you?"

This is our gold...funding applications from our community tell us what work they want to do, (and will continue to do), even if we can't fund it now. We end up with a list of work they want.

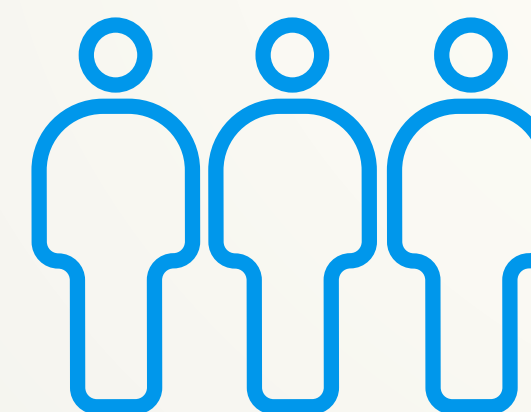
Community delivery • Currently **20%** of our Australian Government contract

Negotiated project outcomes and on-ground activities

- On-ground works
- Educational materials
- Workshops, field days etc
- Equipment and capacity support

How the Community influences what we do at Wheatbelt NRM

1. Membership



Wheatbelt NRM Constitution • Can't change without our Members

Community Skills-based Board of Directors • Elected by our Members

51 Member organisations (doing NRM in the Avon River Basin)

Over **1500** Associate members (our NRM community)...and growing

We are very proud of this

2. Strategic Planning

Regional Strategy (5 years) • 3 rounds of consultation

What we'd like everyone to do

150 face to face interviews to develop the strategy

Plan for the environment

Adaptive Management process that is updated annually

Organisational Strategy (3 years) • Determined by our skills-based Community Board

What we'll do

Partner Organisations Work • We inform their strategy and their strategy informs us

Partnership approach (i.e we work with them)

Currently 22 partners

3. Seeking Funding

New Project Ideas • Staff develop from Community conversations

Community can input from website

New Initiatives • Approved by our Community Board to deliver as part of the organisational strategy

Funding Applications • Partnership approach

- Joint applications
- Contracting
- Co-delivery